

DULCODOS Pool Basic dosing system

with Splash Control 2 controller for pH and ORP/redox



The DULCODOS Pool Basic unit, is a perfectly coordinated, reliable, plug & play dosing package. Consisting of the controller, sensors and dosing pumps, and with chemical tanks available, it requires only very simple installation to get started.

The Splash Control 2 measuring and control unit, installed in the dosing system, can be operated easily via a coloured touch display. For fully automatic control of pH value and chlorine concentration, two peristaltic pumps are integrated in the unit. The measuring parameters are pH value and ORP/redox potential. The ORP/redox potential is used to control the chlorine concentration in the water.

The sample water housing has a modular design. With integrated particle filter and sampling water tap, it reduces the water requirement for measurement. It is also very easy to operate and maintenance-friendly. The compact structure and clear design make installation a child's play. With the dosing system DULCODOS Pool Basic giving you constantly good swimming pool water, you can simply enjoy the fun of swimming.

Your benefits

- Constantly good water quality
- Simple menu-driven operation via colour touch display
- Wide range of monitoring functions
- Low operating costs
- Simple and fast installation

Application

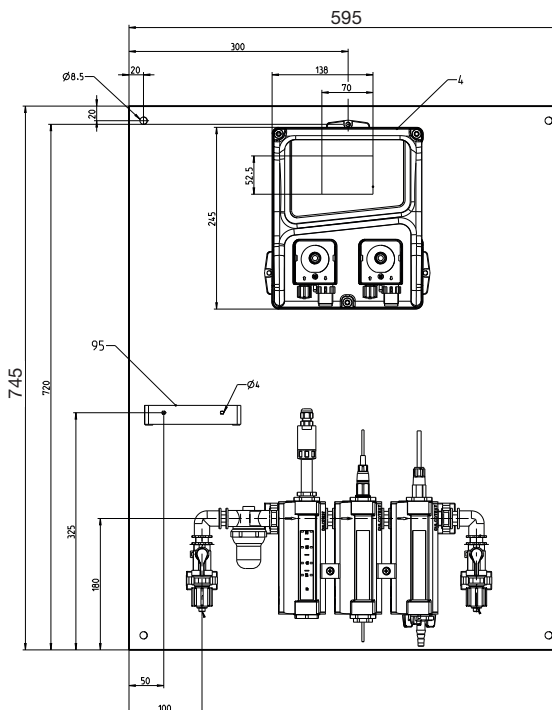
- For private swimming pools with up to 200 m³ volume

DULCODOS Pool Basic dosing system

with Splash Control 2 controller for pH and ORP/redox

Technical Details

- 2-channel swimming pool controller Splash Control 2 with coloured touch display and measuring, control and dosing functions for pH value and chlorine dosing via ORP/redox potential
- 2 integrated peristaltic dosing pumps DULCOflex dosing rate: 2.4 l/h at 1.5 bar back pressure
- Pre-assembled on a panel
H x W x D = 745 x 595 x 120 mm
- Sample water monitoring
- Monitoring of the chemical supply
- Bypass housing type DGMA for sensors with sample water monitoring and filter
- Dosing monitoring for protection against overdosing with dosing stop and overdosing alarm
- Self-diagnosis of the sensors
- Adjustable sensor run-in time
- Modbus RTU interface (RS485) as standard
- Digital pause input
- 1-point calibration (pool value) possible
- Alarm relay output
- Electrical connection: 230 VAC, 50/60 Hz



ProMinent Group
info@prominent.com

